


# 1237 San Antonio Road Palo Alto, California



DEVCON

CONSTRUCTION  
INCORPORATED

690 Gibraltar Drive  
Milpitas, California 95035  
(408)942-8200 Lic. #399163



GENERAL NOTES:  
CONTRACTOR SHALL FIELD VERIFY ALL JOB CONDITIONS AND DIMENSIONS. VARIATIONS THEREOF FROM THE DRAWINGS MUST BE REPORTED TO THE ARCHITECT.  
DETAILS INDICATED ON THE DRAWINGS ARE REPRESENTATIVE AND TYPICAL. ALL ATTACHMENTS AND CONNECTIONS SHALL CONFORM TO BEST PRACTICE AND SHALL BE THE CONTRACTOR'S RESPONSIBILITY.

THIS DRAWING EMBODIES IDEAS, DESIGNS, ARRANGEMENTS, PLANS AND SPECIFICATIONS WHICH ARE PROPRIETARY TO DEVCON CONSTRUCTION INC., AND WHICH WERE DESIGNED, CREATED, EVOLVED AND DEVELOPED FOR USE SOLELY IN CONNECTION WITH THE SPECIFIED PROJECT. NO TRANSFER OF ANY RIGHTS THERETO IS INTENDED OR EFFECTED BY DELIVERY HEREOF, AND EXCEPT UPON THE WRITTEN PERMISSION OF DEVCON CONSTRUCTION INC., THE DRAWING IS NOT TO BE DISCLOSED TO OTHERS, REPRODUCED OR COPIED IN WHOLE OR IN PART, OR USED IN THE FABRICATION OR CONSTRUCTION OF BUILDINGS, STRUCTURES, FOUNDATIONS, OR ANY PORTIONS THEREOF, FOR OTHER THAN THE SPECIFIED PROJECT.

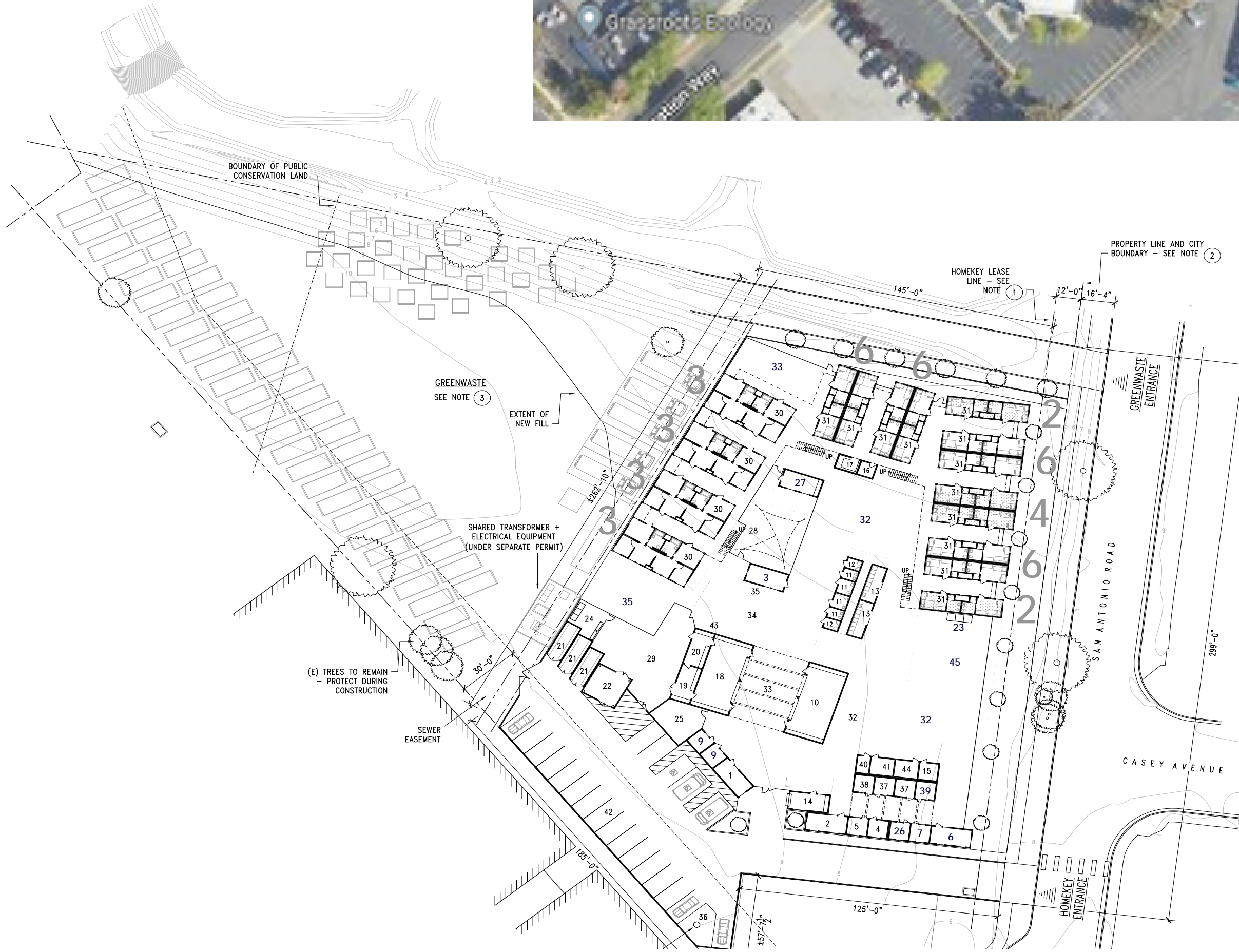
© DEVCON CONSTRUCTION, INC.

## GreenWaste Facility Relocation & LifeMoves Construction

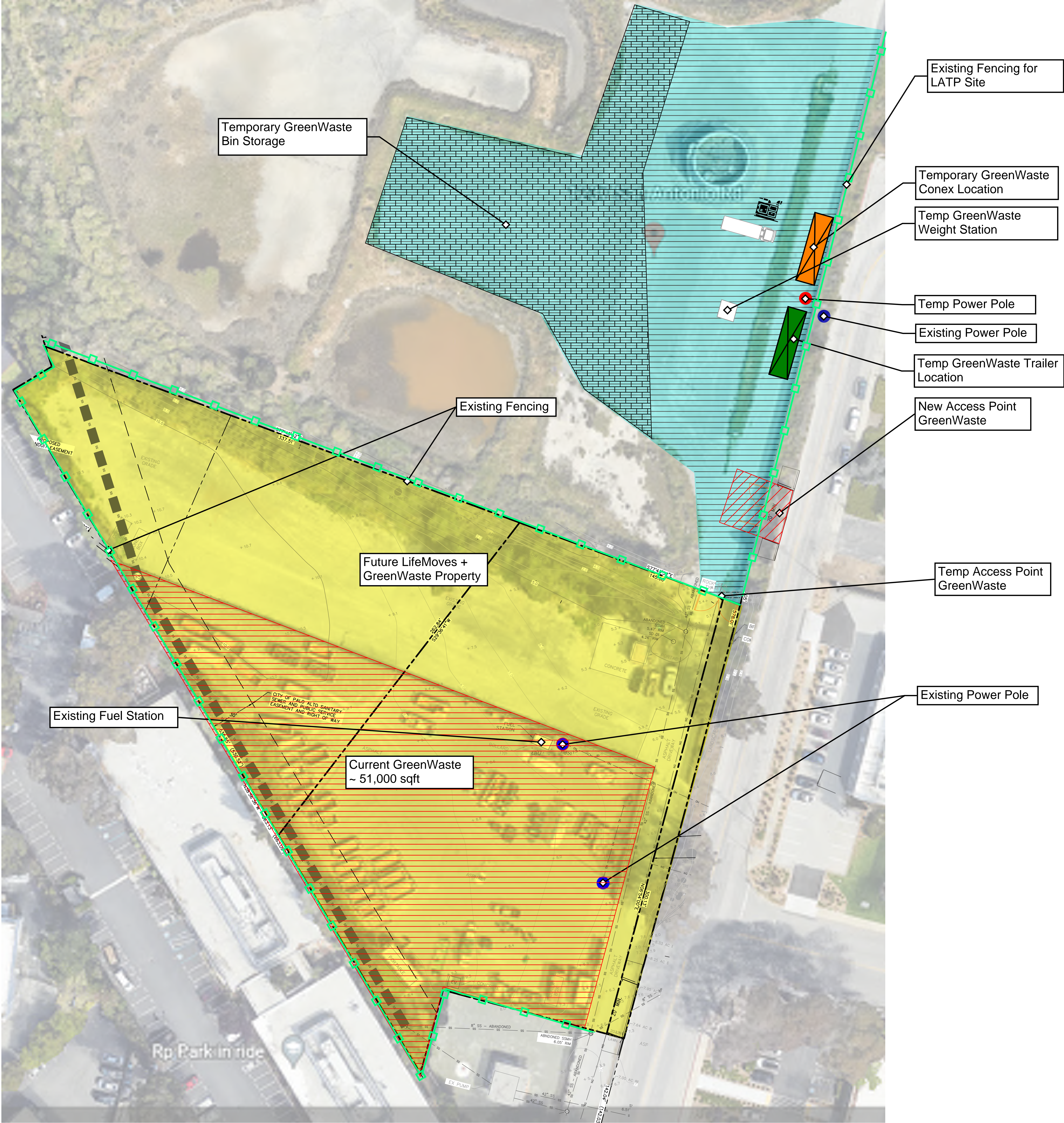
REVISIONS			
NO.	DATE	DESCRIPTION	BY

## CONSTRUCTION LOGISTICS PLANS

JOB NO.	SHEET NO.
DATE:	
DRAWN:	
CHECKED:	
ISSUE:	



**SITE LOGISTICS PLAN**  
**PHASE I TEMP YARD GW STORAGE AND**  
**CONSTRUCTION STAGING AND PARKING**



**DEVCON** CONSTRUCTION  
**DEVCON** INCORPORATED  
**DEVCON**  
**DEVCON**

690 Gibraltar Drive  
Milpitas, California 95035  
(408)942-8200 Lic. #399163

GENERAL NOTES:  
CONTRACTOR SHALL FIELD VERIFY ALL JOB CONDITIONS AND DIMENSIONS. VARIATIONS THEREOF FROM THE DRAWINGS MUST BE REPORTED TO THE ARCHITECT. DETAILS INDICATED ON THE DRAWINGS ARE REPRESENTATIVE AND TYPICAL. ALL ATTACHMENTS AND CONNECTIONS SHALL CONFORM TO BEST PRACTICE AND SHALL BE THE CONTRACTOR'S RESPONSIBILITY.

THIS DRAWING EMBODIES IDEAS, DESIGNS, ARRANGEMENTS, PLANS AND SPECIFICATIONS WHICH ARE PROPRIETARY TO DEVCON CONSTRUCTION INC. AND WHICH WERE DESIGNED, CREATED, EVOLVED AND DEVELOPED FOR USE SOLELY IN CONNECTION WITH THE SPECIFIED PROJECT. NO TRANSFER OF ANY RIGHTS THERETO IS INTENDED OR EFFECTED BY DELIVERY HEREOF, AND EXCEPT UPON THE WRITTEN PERMISSION OF DEVCON CONSTRUCTION INC., THE DRAWING IS NOT TO BE DISCLOSED TO OTHERS, REPRODUCED OR COPIED IN WHOLE OR IN PART, OR USED IN THE FABRICATION OR CONSTRUCTION OF BUILDINGS, STRUCTURES, FOUNDATIONS, OR ANY PORTIONS THEREOF, FOR OTHER THAN THE SPECIFIED PROJECT.

© DEVCON CONSTRUCTION, INC.

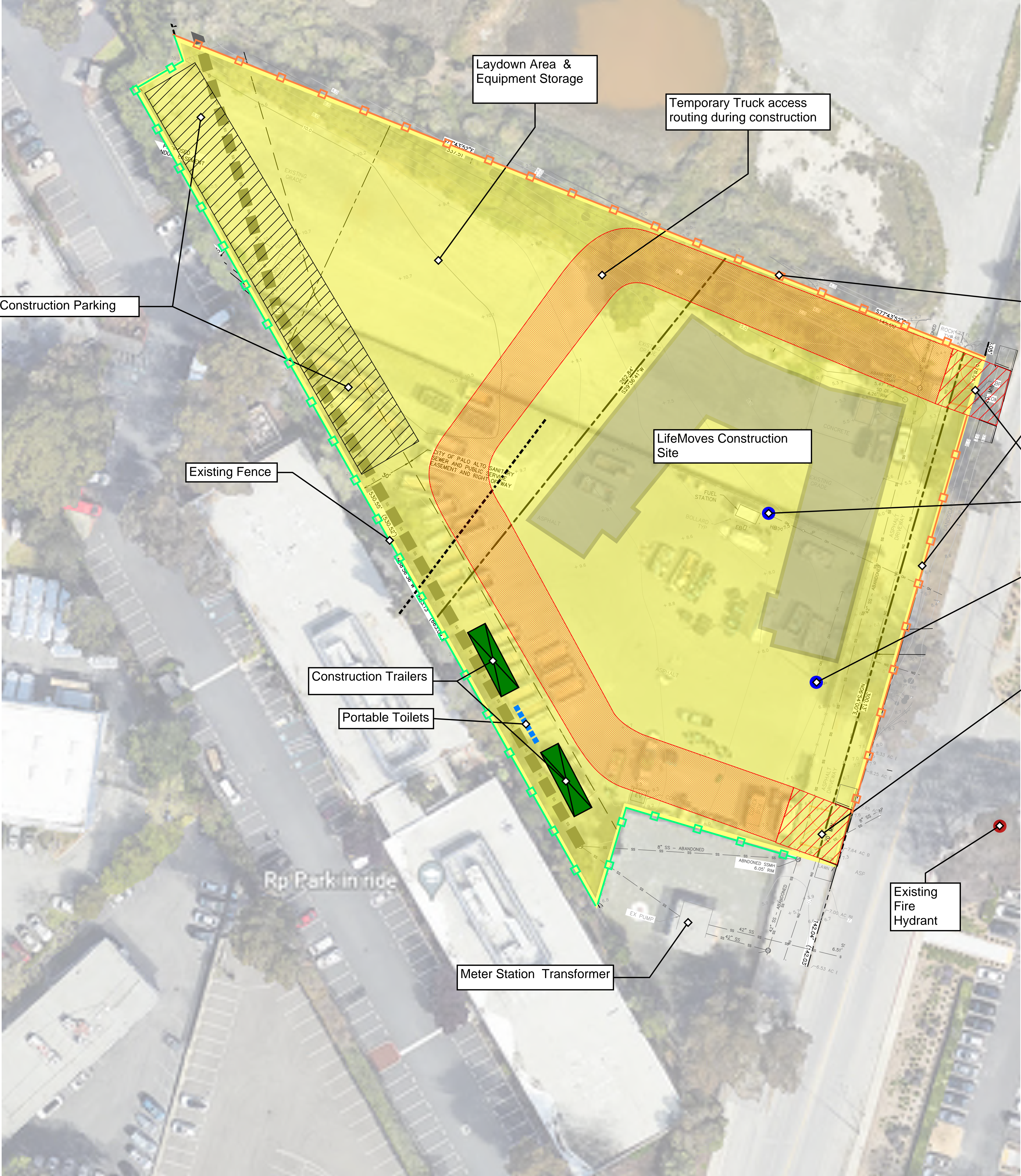
**Phase I -**  
**GreenWaste**  
**Facility**  
**Relocation**

REVISIONS			
NO.	DATE	DESCRIPTION	BY

**CONSTRUCTION LOGISTICS**  
**PARKING & STAGING PLAN**

JOB NO.	SHEET NO.  <b>Figure 1</b>
DATE:	
DRAWN:	
CHECKED:	
ISSUE:	

SITE LOGISTICS PLAN  
PHASE II DEMO AND PREPARATION FOR GRADING





CONSTRUCTION  
INCORPORATED

690 Gibraltar Drive  
Milpitas, California 95035  
(408)942-8200 Lic. #399163

GENERAL NOTES:  
CONTRACTOR SHALL FIELD VERIFY ALL JOB CONDITIONS AND DIMENSIONS. VARIATIONS THEREOF FROM THE DRAWINGS MUST BE REPORTED TO THE ARCHITECT. DETAILS INDICATED ON THE DRAWINGS ARE REPRESENTATIVE AND TYPICAL. ALL ATTACHMENTS AND CONNECTIONS SHALL CONFORM TO BEST PRACTICE AND SHALL BE THE CONTRACTOR'S RESPONSIBILITY.

THIS DRAWING EMBODIES IDEAS, DESIGNS, ARRANGEMENTS, PLANS AND SPECIFICATIONS WHICH ARE PROPRIETARY TO DEVCON CONSTRUCTION INC. AND WHICH WERE DESIGNED, CREATED, EVOLVED AND DEVELOPED FOR USE SOLELY IN CONNECTION WITH THE SPECIFIED PROJECT. NO TRANSFER OF ANY RIGHTS THERETO IS INTENDED OR EFFECTED BY DELIVERY HEREOF, AND EXCEPT UPON THE WRITTEN PERMISSION OF DEVCON CONSTRUCTION INC., THE DRAWING IS NOT TO BE DISCLOSED TO OTHERS, REPRODUCED OR COPIED IN WHOLE OR IN PART, OR USED IN THE FABRICATION OR CONSTRUCTION OF BUILDINGS, STRUCTURES, FOUNDATIONS, OR ANY PORTIONS THEREOF, FOR OTHER THAN THE SPECIFIED PROJECT.

© DEVCON CONSTRUCTION, INC.

Phase II -  
LifeMoves  
Construction

REVISIONS			
NO.	DATE	DESCRIPTION	BY

CONSTRUCTION LOGISTICS  
PLANS

JOB NO.  
DATE:  
DRAWN:  
CHECKED:  
ISSUE:

SHEET NO.  
  
**Figure 2**

SITE LOGISTICS PLAN  
PHASE II - MODULAR SLEEPER STAGING AND  
SETTING



**DEVCON** CONSTRUCTION  
INCORPORATED

690 Gibraltar Drive  
Milpitas, California 95035  
(408)942-8200 Lic. #399163

GENERAL NOTES:  
CONTRACTOR SHALL FIELD VERIFY ALL JOB CONDITIONS AND DIMENSIONS. VARIATIONS THEREOF FROM THE DRAWINGS MUST BE REPORTED TO THE ARCHITECT.  
DETAILS INDICATED ON THE DRAWINGS ARE REPRESENTATIVE AND TYPICAL. ALL ATTACHMENTS AND CONNECTIONS SHALL CONFORM TO BEST PRACTICE AND SHALL BE THE CONTRACTOR'S RESPONSIBILITY.

THIS DRAWING EMBODIES IDEAS, DESIGNS, ARRANGEMENTS, PLANS AND SPECIFICATIONS WHICH ARE PROPRIETARY TO DEVCON CONSTRUCTION INC., AND WHICH WERE DESIGNED, CREATED, EVOLVED AND DEVELOPED FOR USE SOLELY IN CONNECTION WITH THE SPECIFIED PROJECT. NO TRANSFER OF ANY RIGHTS THERETO IS INTENDED OR EFFECTED BY DELIVERY HEREOF, AND EXCEPT UPON THE WRITTEN PERMISSION OF DEVCON CONSTRUCTION INC., THE DRAWING IS NOT TO BE DISCLOSED TO OTHERS, REPRODUCED OR COPIED IN WHOLE OR IN PART, OR USED IN THE FABRICATION OR CONSTRUCTION OF BUILDINGS, STRUCTURES, FOUNDATIONS, OR ANY PORTIONS THEREOF, FOR OTHER THAN THE SPECIFIED PROJECT.

© DEVCON CONSTRUCTION, INC.

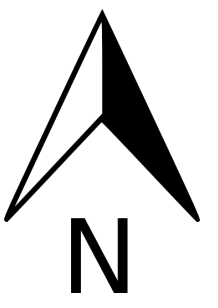
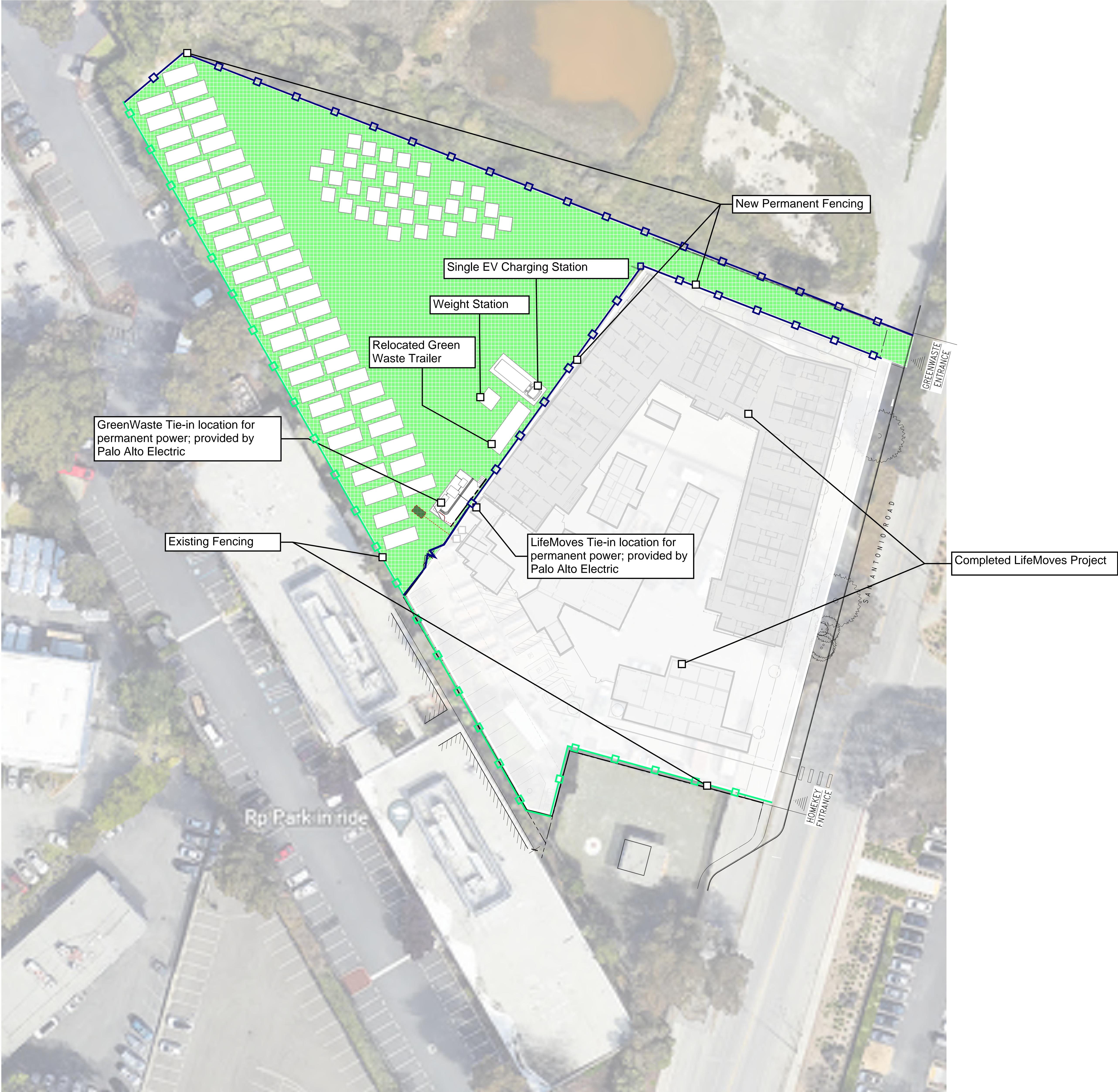
Phase II -  
LifeMoves  
Construction

REVISIONS			
NO.	DATE	DESCRIPTION	BY

LIFEMOVES BUILD-OUT  
FOR TCO

JOB NO.	SHEET NO.  <b>Figure 3</b>
DATE:	
DRAWN:	
CHECKED:	
ISSUE:	

SITE LOGISTICS PLAN  
PHASE III - GreenWaste New Yard Relocation and  
Build-out



**DEVCON** CONSTRUCTION  
INCORPORATED  
690 Gibraltar Drive  
Milpitas, California 95035  
(408)942-8200 Lic. #399163

GENERAL NOTES:  
CONTRACTOR SHALL FIELD VERIFY ALL JOB CONDITIONS AND DIMENSIONS. VARIATIONS THEREOF FROM THE DRAWINGS MUST BE REPORTED TO THE ARCHITECT. DETAILS INDICATED ON THE DRAWINGS ARE REPRESENTATIVE AND TYPICAL. ALL ATTACHMENTS AND CONNECTIONS SHALL CONFORM TO BEST PRACTICE AND SHALL BE THE CONTRACTOR'S RESPONSIBILITY.

THIS DRAWING EMBODIES IDEAS, DESIGNS, ARRANGEMENTS, PLANS AND SPECIFICATIONS WHICH ARE PROPRIETARY TO DEVCON CONSTRUCTION INC., AND WHICH WERE DESIGNED, CREATED, EVOLVED AND DEVELOPED FOR USE SOLELY IN CONNECTION WITH THE SPECIFIED PROJECT. NO TRANSFER OF ANY RIGHTS THERETO IS INTENDED OR EFFECTED BY DELIVERY HEREOF, AND EXCEPT UPON THE WRITTEN PERMISSION OF DEVCON CONSTRUCTION INC., THE DRAWING IS NOT TO BE DISCLOSED TO OTHERS, REPRODUCED OR COPIED IN WHOLE OR IN PART, OR USED IN THE FABRICATION OR CONSTRUCTION OF BUILDINGS, STRUCTURES, FOUNDATIONS, OR ANY PORTIONS THEREOF, FOR OTHER THAN THE SPECIFIED PROJECT.

© DEVCON CONSTRUCTION, INC.

**Phase III -  
GreenWaste  
Construction**

REVISIONS

NO.	DATE	DESCRIPTION	BY

**GREENWASTE FINAL  
BUILD-OUT AND ACCEPTANCE**

JOB NO.	SHEET NO.
DATE:	<b>Figure 4</b>
DRAWN:	
CHECKED:	
ISSUE:	

SITE LOGISTICS PLAN  
Overall Finished Site Plan



DEVCON  
DEVCON  
DEVCON  
DEVCON

CONSTRUCTION  
INCORPORATED  
  
690 Gibraltar Drive  
Milpitas, California 95035  
(408)942-8200 Lic. #399163

GENERAL NOTES:  
CONTRACTOR SHALL FIELD VERIFY ALL JOB CONDITIONS AND DIMENSIONS. VARIATIONS THEREOF FROM THE DRAWINGS MUST BE REPORTED TO THE ARCHITECT.  
DETAILS INDICATED ON THE DRAWINGS ARE REPRESENTATIVE AND TYPICAL. ALL ATTACHMENTS AND CONNECTIONS SHALL CONFORM TO BEST PRACTICE AND SHALL BE THE CONTRACTOR'S RESPONSIBILITY.

THIS DRAWING EMBODIES IDEAS, DESIGNS, ARRANGEMENTS, PLANS AND SPECIFICATIONS WHICH ARE PROPRIETARY TO DEVCON CONSTRUCTION INC., AND WHICH WERE DESIGNED, CREATED, EVOLVED AND DEVELOPED FOR USE SOLELY IN CONNECTION WITH THE SPECIFIED PROJECT. NO TRANSFER OF ANY RIGHTS THERETO IS INTENDED OR EFFECTED BY DELIVERY HEREOF, AND EXCEPT UPON THE WRITTEN PERMISSION OF DEVCON CONSTRUCTION INC., THE DRAWING IS NOT TO BE DISCLOSED TO OTHERS, REPRODUCED OR COPIED IN WHOLE OR IN PART, OR USED IN THE FABRICATION OR CONSTRUCTION OF BUILDINGS, STRUCTURES, FOUNDATIONS, OR ANY PORTIONS THEREOF, FOR OTHER THAN THE SPECIFIED PROJECT.

© DEVCON CONSTRUCTION, INC.

Life Moves  
Overall  
Construction

REVISIONS			
NO.	DATE	DESCRIPTION	BY

COMPLETION OF PROJECT  
FOR ALL STAGES

JOB NO.
DATE:
DRAWN:
CHECKED:
ISSUE:

SHEET NO.  
**Figure 5**

TRUCK HAUL ROUTE  
MATERIAL AND OFFHAUL TRUCK ROUTES



DEVCON  
CONSTRUCTION  
INCORPORATED

690 Gibraltar Drive  
Milpitas, California 95035  
(408)942-8200 Lic. #399163

GENERAL NOTES:  
CONTRACTOR SHALL FIELD VERIFY ALL JOB CONDITIONS AND DIMENSIONS. VARIATIONS THEREOF FROM THE DRAWINGS MUST BE REPORTED TO THE ARCHITECT. DETAILS INDICATED ON THE DRAWINGS ARE REPRESENTATIVE AND TYPICAL. ALL ATTACHMENTS AND CONNECTIONS SHALL CONFORM TO BEST PRACTICE AND SHALL BE THE CONTRACTOR'S RESPONSIBILITY.

THIS DRAWING EMBODIES IDEAS, DESIGNS, ARRANGEMENTS, PLANS AND SPECIFICATIONS WHICH ARE PROPRIETARY TO DEVCON CONSTRUCTION INC., AND WHICH WERE DESIGNED, CREATED, EVOLVED AND DEVELOPED FOR USE SOLELY IN CONNECTION WITH THE SPECIFIED PROJECT. NO TRANSFER OF ANY RIGHTS THERE TO IS INTENDED OR EFFECTED BY DELIVERY HEREOF, AND EXCEPT UPON THE WRITTEN PERMISSION OF DEVCON CONSTRUCTION INC., THE DRAWING IS NOT TO BE DISCLOSED TO OTHERS, REPRODUCED OR COPIED IN WHOLE OR IN PART, OR USED IN THE FABRICATION OR CONSTRUCTION OF BUILDINGS, STRUCTURES, FOUNDATIONS, OR ANY PORTIONS THEREOF, FOR OTHER THAN THE SPECIFIED PROJECT.

© DEVCON CONSTRUCTION, INC.

GreenWaste  
Facility Relocation  
& LifeMoves  
Construction

REVISIONS			
NO.	DATE	DESCRIPTION	BY

TRUCK HAUL ROUTES  
FROM PROJECT SITE

JOB NO.	SHEET NO.  TRUCK HAUL ROUTE MATERIAL AND OFFHAUL TRUCK ROUTES
DATE:	
DRAWN:	
CHECKED:	
ISSUE:	

TRUCK HAUL ROUTE  
MATERIAL AND OFFHAUL TRUCK ROUTES



DEVCON  
CONSTRUCTION  
INCORPORATED

690 Gibraltar Drive  
Milpitas, California 95035  
(408)942-8200 Lic. #399163

GENERAL NOTES:  
CONTRACTOR SHALL FIELD VERIFY ALL JOB CONDITIONS AND DIMENSIONS. VARIATIONS THEREOF FROM THE DRAWINGS MUST BE REPORTED TO THE ARCHITECT. DETAILS INDICATED ON THE DRAWINGS ARE REPRESENTATIVE AND TYPICAL. ALL ATTACHMENTS AND CONNECTIONS SHALL CONFORM TO BEST PRACTICE AND SHALL BE THE CONTRACTOR'S RESPONSIBILITY.

THIS DRAWING EMBODIES IDEAS, DESIGNS, ARRANGEMENTS, PLANS AND SPECIFICATIONS WHICH ARE PROPRIETARY TO DEVCON CONSTRUCTION INC., AND WHICH WERE DESIGNED, CREATED, EVOLVED AND DEVELOPED FOR USE SOLELY IN CONNECTION WITH THE SPECIFIED PROJECT. NO TRANSFER OF ANY RIGHTS THERETO IS INTENDED OR EFFECTED BY DELIVERY HEREOF, AND EXCEPT UPON THE WRITTEN PERMISSION OF DEVCON CONSTRUCTION INC., THE DRAWING IS NOT TO BE DISCLOSED TO OTHERS, REPRODUCED OR COPIED IN WHOLE OR IN PART, OR USED IN THE FABRICATION OR CONSTRUCTION OF BUILDINGS, STRUCTURES, FOUNDATIONS, OR ANY PORTIONS THEREOF, FOR OTHER THAN THE SPECIFIED PROJECT.

© DEVCON CONSTRUCTION, INC.

GreenWaste  
Facility Relocation  
& LifeMoves  
Construction

REVISIONS			
NO.	DATE	DESCRIPTION	BY

TRUCK HAUL ROUTES  
FROM PROJECT SITE

JOB NO.	SHEET NO. TRUCK HAUL ROUTE MATERIAL AND OFFHAUL TRUCK ROUTES
DATE:	
DRAWN:	
CHECKED:	
ISSUE:	